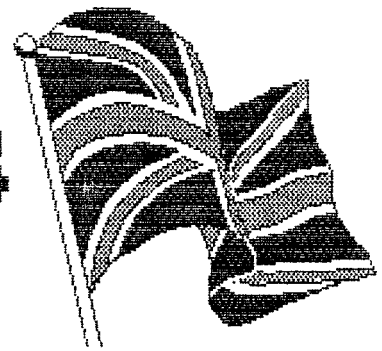


geoNEWS



JOURNAL OF geoCLUB

ISSUE 5

JANUARY 1992



EDITOR'S COMMENT

I had hoped that this issue would reach you all in time for Christmas but as usual time seems to be overtaking me, still I can wish you all a **HAPPY NEW YEAR** !. I think it is safe to say that 1992 looks like being a good year for the GEOS users here in the UK. You will find with this issue, if you have paid your subscription, 2 free disks. originally I had intended them to be two single sided disks but with the donation of some very good PrintShop graphics I decided to clip the disks and use them double sided, so though you still have only two disks you have twice the quantity. Disks 1 and 2 were described briefly in

December geoNEWS, it was planned that there would be a fuller description with this issue but the geoWrite files did not arrive in time from the author. Disk 3 contains some PrintShop graphics already converted to GEOS photo albums. Disk 4 is the actual graphics plus more in their original format so that you PrintShop fans can use them without having to convert them back. Those of you who are not PrintShop users can still make use of the disk as there is an excellent graphic viewer, and print-out option and of course you can still convert all the graphics into GEOS for use there. We have to thank our Australian member Peter Hunt for these, thank's Pete. As you read through these pages you will see a short review of NewTools 2 which can be found on Dweezil Disk 1 and also an advertizement for all the disk's so far released in the Dweezil Disk range. These are at present on special offer to members only courtesy of the author David B Ferguson and are available for immediate dispatch, Thank's Dave it's much appreciated and regards to Dweezil the Dog. I hope that this is the first of many, not just of Dave's excellent software. Next month I hope to do a review of Dweezil Disk 3 which though it has not been released yet will I hope be available from geoCLUB as soon as it is, if you like and use his

INFO	
NAME	FRANK CASSIDY
STREET	
TOWN	
CITY	MANCHESTER
ZIP	
TEL	
PACKET	
<input checked="" type="checkbox"/> WRITE PROTECT	

continue Page 6

Fonts for the Memory

(with apologies to BOB HOPE)

by Brian Mills

Reading an article from the USA and owning a considerable reference document published by the "Fontnatic" Dick Estel from Fresno in America, set me thinking how Font mania may be slowly overtaking us without realising it, even in our everyday use of "English".

There are approaching a thousand different font styles and variants now available, either on P.D or commercial disk ware, (the majority if not all generated from the States.) to integrate with our Geos programs.

Font designs are made to suit your mood, that special occasion, Season, NLQ, MEGGA, etc, etc, and with the flexibility of Bold, italics, outline can even be made to look different from a single character font type.

Particular care is needed in the naming of a new Font style (to avoid any copywrite infringement should one exist??), also to avoid confusion and stamp your own individual mark on the Geos scene.

Before the USA take over completely the Font naming how about the British introducing a few choice named variety after all it is often remarked that the two countries are united by a common Heritage and seperated by a common language?

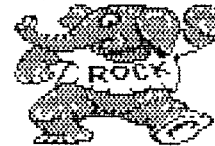
Illustrating the point with key graphic pictures how about:-

FONTum - used in ghost writing or at the Opera.



FONTaid - International fund raising font.

EleFONT - Large grey font - hard to forget.



FONT en Blaue - blue font from France

Capo de FONT''y - Italian font figures only

StratFONT on Avon - as used by W. Shakespeare.



Henry FONT - model 'T' font - available in black only

SeaFONT - small and wavy has its ups and downs

GardenFONT - rather flowery but poses few problems

TeleFONT - lots of rings in this one, often gets the numbers wrong.



Her FONT Brewer - the German "LArGER" font

AeroFONT - a plane Russian font.

HippoFONTimus - a megga font used for mud slinging.

BreakFONTS - suitable early font to start with.

Very FONT - I like this one quite a lot.

Bank FONTS - often held in reserve

ScaffONTS - supports a building program of megga fonts

FONTue - a well bread Swiss font you can get 'cheesed-off' with.

Count of FONTy Cristoe - suitable for long sentences - worth a fortune!

On consulting my paperback English dictionary for the definition of FONT I am told :-

1. a large bowl for baptismal water
2. the reservoir for oil in an oil lamp
3. Arch. or poetic a fountain or well.

Not a word about Geos use at all !!!

If any readers need to source a particular font type then maybe we can help each other within our user group. There are some very useful articles and information on the use of megga fonts and font editors etc., that if encouraged by any response I may be able reproduce for future newsletter articles - or indeed if any of you out there have any ideas or comments send them along. (Those that can FONT the time that is --- ooooH !!!)

GEOWIZARD

This is a program that pushes the humble C64 and C128 with an REU or GeoRAM one step further the more sophisticated 16-bit machines like the Macintosh. It again proves that the 64 is still a match for the other machines. Once installed it sits in the REU awaiting your command to activate it from almost anywhere and up it pops to temporarily take over the computer. GeoWIZARD will give you the following features; SCREEN DUMP this will dump your present screen either to printer, PhotoScrap or a geoPaint file without using Print Drivers. RUN GEOPAINT AND GEOWRITE together easy, activate the Wizard and load geoPaint, press a key and you'r back in geoWrite. This is it's most powerful option. So if you are in a geoWrite file and need a photo scrap that you have forgotten to cut out of a geoPaint file all that is necessary is to press the Back Arrow (ESC C128) and fire button or Mouse button and the Wizard is activated allowing the user to load geoPaint cut out the scrap and on the click of the button you are back in your original geoWrite file exactly where you left off. There is also Mini Desk that is a separate DA included with GEOWIZARD and goes hand in hand with it. Mini Desk is as it's name suggests is an alternative Desk Top, with it you can Copy, Rename, or Scratch Files. It can be used by it's self as a normal desk accessory or from GeoWizard. You will never again have to quit a program just to copy a file. When activated by pressing BackArrow and Mouse button, a GeoWizard menu appears at the top of the screen showing the options and their short cut keys, eg. SreenDump =

Over

Com + P. If it is screen dump then the screen less this menu is dumped to the appropriate device. To use, You must have an REU with at least one 64K bank free. To determine if GeoWizard can be used on your system the following calculation must be used. Divide the size (K) of your REU by 64 and subtract 1 eg; 128K=1, 256K=2, 512K=7 etc.. Subtract for each RAM or Shadowed Disk you use eg; RAM1541/Shadowed 1541-3, RAM1571-6, RAM1581-13. If you are left with a number greater than 0 then you are in business. This program has to be seen and used to be believed and appreciated, the first time you have a system error and recover from it you'll appreciate the fact you bought it and acknowledge it was worth every penny. The author is Jim Collette who will be well known to many of you as a prolific GEOS programmer and a very good one at that. What you may not know, is that Jim is only 16 yrs old and still at school. I wonder, did he name this program after himself, Geo WIZARD. GEOWIZARD can be obtained direct from Jim at Comm-Plex Software, 6782, Junction Road, Pavilion, New York, 14525, USA. and is only \$16:50 plus a dollar or two for Airmail postage overseas, so for \$19 dollars you can have one of the most up to date and useful pieces of software. Anyone wanting further information please send an SASE and I will forward to you a copy of Jim's advert then if you order please say "I saw it in geoNEWS". If you'd rather buy from a UK distributor wait until early 1992 we may have a special deal going.

GRAPHIC CONVERTERS

One of the best sources for small graphics has got to be PrintShop and PrintMaster. For those of you who do not know of either of these pieces of software they are basically the same PS is produced by Broderbund Software and PM is by Springboard who also market NewsRoom (another good source and mentioned in geoNEWS Issue 2). What PS and PM do, is allow the user to create custom art work very easily. They contain everything within the program for you to create your own posters, greetings cards, banners, letter headings and much more. They have proved to be very popular and so there has been quite a number of third party additions in the font and graphics arena. Many of these graphics are very well designed and ideal for use in GEOS, especially where the smaller graphic is required, for example disk labels etc.. To get from PS/PM graphics to GEOS is very easy, thanks to the great GEOS programmers out there. The hardest thing to do is choose which program to use. amongst the many are the following. **Graphic Storm / Graphic Storm II** by Joe Buckley, these convert PS, PM, Newsroom, Hi-Res and Doodle into GEOS photo scraps. Graphic Storm is available on geoWorld #1 and the up graded version Graphic Storm II is on Storm Systems Disk 1. Graphic Storm will be also available on geoCLUB Disk 5 planned for February. **GET GRAPHIC** by Nick Vitis will convert a whole PS graphic disk into a photo

continue Page 5

album. Due to the limitations of the GEOS photo album a maximum of 127 graphics will fit in any one album, Get Graphic allows you to choose as many or as few as you wish. Documentation is provided, this program is Shareware and a user donation of \$5 is requested, it is hoped that this too will be available to club members on disk 5.

SCRAPIT? by Michael W Schell this converts PS, PM Doodle, Blazing Paddles, Koala etc between each other. Quite a large program at 21K but very versatile. This program is on geoWorld Disk #23 and like the others hopefully on our disk 5. What is unusual about it is that it is CHARITYware and donations are requested from users of this software to go to Cystic Fibrosis Foundation.

GEOS-PM/PS by Roger Lawhorn, this one is a little different as it converts photo scraps into PM or PS graphics and is included on Rogers GeoPrint Disk which costs \$20 it contains other programs along with the two mentioned. I propose to cover other converter type programs in future issues and if it is considered necessary will cover them in greater detail.



MOVING

Please let us know your new address as soon as possible so we can keep your copy of the newsletter coming to you without delay. Send your new address to.....

geoCLUB

Manchester

REVIEW OF '1541 PHYSICAL EXAM' by Alan Morris

What is 1541 Physical Exam, I can hear you all saying? It is principally a program on disk which permits one to regularly check the performance, alignment and speed of the drive unit. The 1541 'Physical Exam' diskette is especially designed to provide a method by which the above parameters can be determined without the use of any other test equipment, other than the C64 computer and the drive itself. Additionally, it permits making a permanent record of its findings to the printer. The 1541 performs very well when in proper alignment (but not exactly very fast). Unfortunately some drives have a tendency to gradually creep out of alignment. The operative word is 'creep'. This occurs from a combination of two conditions. (1) When the drive is 'hot' from continuous use and/or from high room temperature, and (2) when the operation is such as to cause the drive to repeatedly 'bump' the track one-stop (that awful racket heard when formatting for example). In (1) above, the heat causes the aluminium alloy drive pulley on the stepper motor shaft to expand more than the stainless steel shaft of the motor on which it is pressed onto, causing it to be held less tightly. In (2) above, the track stepper motor is quite heavy. When it drives against the 'stop' it strikes with considerable impact, much as a hammer blow. These repeated 'hammer-blows' gradually move the shaft within the pulley, so that at some point, the drive is sufficiently

continue Page 7

NEW TOOLS 2

Elsewhere in this issue you will see an advertisement for Dweezil Disks 1 and 2 and geoSTAMP by David B Ferguson. You may also notice that we are the Official UK Distributor for these disks and so you have no \$'s to find and no postage, this price is a special offer for the month of January only to paid up members. The regular price is \$16:95 + 15% overseas shipping = \$19:50 (£11:50). What is NewTools2 ? Well you can sample some of Dave's excellent work on one of our free disk supplied by Geos User Club, in the form of NewTools (1?). There is also a sample page on the disk of the effects that can be achieved with NewTools and I have displayed some simple text manipulations possible with the extra tools of NewTools2. It is basically a set of 16 manipulation tools for use within geoPAINT. There are four basic manipulations each having a further four directions, these being Skewing (?), Slanting, Arrowing and Rotating 45 degrees. There's also Arcing and Arching and much more, it's so versatile you won't believe what is possible. It is simplicity itself to use, a hallmark of Dave's work. Just create your graphic or text and then go up to the GEOS menu and choose NewTools. A new toll selection box then appears along the bottom of the screen and an over-size arrow as the pointer. Move the arrow to the top corner of the chosen piece and click, go to the bottom right corner and click, Hey-presto before your eyes NT2 starts to work. There is also the choice of enlarging by a

ratio of 2:1 and 3:1, up, down and sideways which can give very good effects especially on text, those of you who have seen my CasScan logo will know what I mean. So, sample NewTools on geoCLUB Disk 2 and appreciate GEOS programming at it's best. NewTools2 the improved version is available on Dweezil Disk 1 from geoCLUB.

ARCING ARCHING
GEOCLUB
FRANK CASANDY

Text Samples Created with NewTools2

From Page 1

lable printer program which was reviewed in last months geoNEWS then Dweezil Disk 3 is for you, a very much improved lable printer is included on the disk which not only allows far larger scraps to be used, almost the size of my screen-dump lable. It also allows up to six lines of text, what a bonus. There will also be another double sided disk on offer in the next issue full of the very best PD/Shareware GEOS software, and in the coming months there will be some PrintShop graphics for conversion into GEOS. If anyone has some GEOS software they would like to donate to the library please send me a brief discription and the source, so I can

continue page 8

from page 5

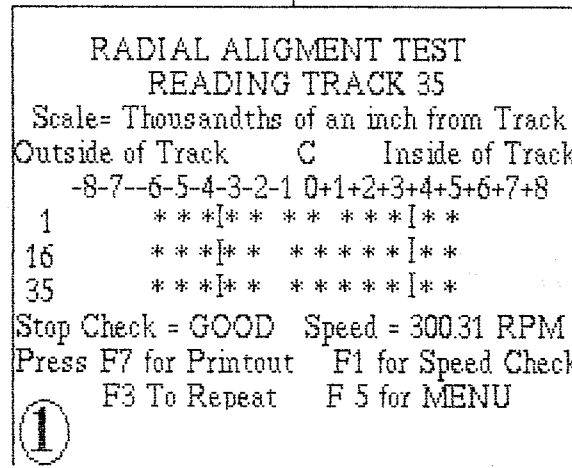
misaligned to cause difficulties in reading and writing diskettes which were recorded on properly aligned drives. Additionally, the speed at which the diskettes rotate at is also very important. Disks rotate at a speed of 300 rpm, with an acceptable tolerance of +/- 1 rpm. The speed control cct. I have found to be very reliable. Speed fluctuations do however occur due to eventual wear & tear on the rubber drive band from the main motor to capstan fly-wheel. It simply stretches with age. Now we know some of the problems

associated with the 1541 drive, how does the program help? After loading the diskette, the screen displays : TEST WHAT DEVICE #? 8 ie defaults to drive 8, but can be changed to 9 if a second drive is in use. After the selection is made, the next screen offers two choices : F1 FOR

SPEED TEST and F3 FOR RADIAL ALIGNMENT TEST. It is necessary to perform the speed check first, for obvious readings. The radial alignment check would be meaningless, if the speed was incorrect. Look at diagram (1) for a typical printout from a good drive, after requesting a speed check. Diagram (2) would be a typical display for a drive that has a good radial alignment. Looking more closely at the speed check, 10 passes are made. These are then averaged to produce the final figure. Also each figure is entered into an array. This allows the program to check the highest and lowest figure. If the

limits are outside +/- 0.6 rpm, this would indicate a 'POOR' belt & clamp test. Errors here would indicate something wrong with the speed control circuit, a loose or worn drive belt (the most likely cause), a diskette with a binding jacket (try another formatted disk) or mal-adjustment of the clamping mechanism-all would need investigating before moving onto the radial alignment check. The results of diagram (2) require further explanation. The program will put a scale on the screen representing the recorded track and the adjacent area on each side of it. It will then read

the TEST TRACKS on the 'Physical Exam' diskette, on which sectors have been written 'off track' (using a specially constructed disk drive). The program will display only the sectors that it is able to read on YOUR drive, and will print an asterisk at the proper place on the scale to



show how far each sector is from the proper track. The drive should show a well balanced display with all positions between the vertical 'fence' lines filled in, for each of the three tracks checked 1 : 16 : 35 representing outer, middle and inner portions of the disk surface. A good drive is capable of reading off-tracks of about +/- 6 thousandths of an inch, symmetrically displaced either side of centre. Misaligned drives produce various displays, dependent on symptom. Asterisks may be tending all to the left or right of centre or missing completely from track 16 and/or 35. I think it is beyond the scope of this article to include how to

take corrective action if the radial alignment is out. Suffice to say, several pages in the manual cover this area in great depth. The procedures do however involve adjustment to the TRACK I STOP and/or STEPPER MOTOR. I feel these adjustments are easily carried out by anyone who feels confident about their own abilities, once inside the drive unit. In essence therefore, the program is used to maintain a good working drive by carrying out regular checks, say twice a year. Comparing results with those previously recorded, would indicate if corrective action is necessary. One final note, the program portion on the diskette is not protected and therefore I keep backup copies on tape as well as

disk. The copy on tape would permit getting the program into memory, when an occasion exists where a drive is so far out of alignment, it will not read a disk at all. It is however impossible to back up the TEST-TRACKS. Therefore a complete backup of the whole disk would produce meaningless results. I have used two 1541 drives now for almost 10yrs. In that period of time, each one has had new drive belts about every two years to maintain consistent speed throughout. Both drives have then been checked with

'Physical Exam' and adjusted where necessary when required. I hope this article has given you an insight into some of the inner secrets of a 1541. I've found the program invaluable and I'm sure has saved me a small fortune over the years. I am prepared to offer a limited amount of my time to any GeoClub member, who might require assistance with their 1541 problems..

I can be contacted on 0244 301764 or if like me you are a Radio Ham, drop me a packet message to G4BDM at GB7OAR. Finally I am very reluctant to lend the program out to anybody. It was obtained from a software company in the U.S.A. and would be very difficult to replace if damaged or lost.

②

SPEED TEST DRIVE 8

RPM = 300.15
 RPM = 300.3
 RPM = 300.3
 RPM = 300.45
 RPM = 300.45
 RPM = 300.45
 RPM = 300.45
 RPM = 300.3
 RPM = 300.15
 RPM = 300.15

AVERAGE SPEED IS 300.31 RPM O.K.

BELT AND CLAMPING TEST ARE O.K.

Press F5 To Return To Menu
 Press F1 To Repeat Test
 Press F3 For Radial Align Test

From Page 6

check that it IS PD or Shareware. If you have PrintShop graphics DO NOT send a complete list of the graphics on the disk just the first couple will suffice. Well I guess thats all for now. Thanks again for your support, without you there's no geoCLUB.

Happy geos-ing. Frank

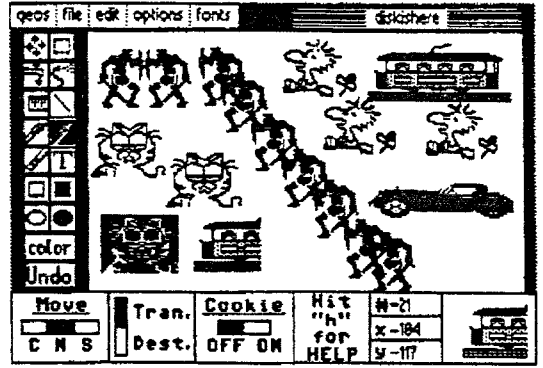
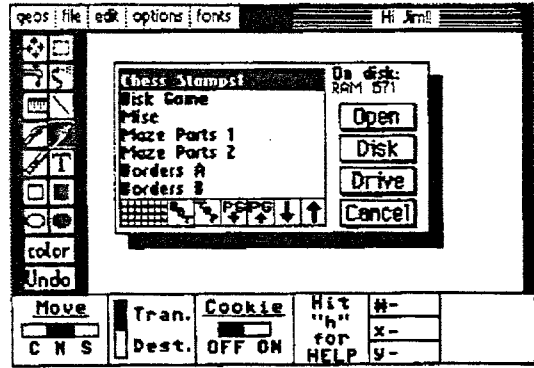


Quincy Softworks

The Mammals Who Make GEOS Better!
presents....

Thank you for supporting GEOS software developers. If you ever have a question or problem regarding any of our products, please let me know.
Dave Ferguson

"Dweezil Never Bytes!"



GeoSTAMP, with geoPaint in background.

GeoSTAMP, with geoPaint in background.

One of our beta-testers said it best about this new geoPaint Desk Accessory: "This is one program you have to use to appreciate, and once you use it, you'll LOVE IT!" With all of the things GeoSTAMP can do for your geoPaint masterpieces, it is probably the most underpriced program we have ever sold! Stamp out multiple copies of small, geoPaint graphics with the speed and accuracy that cut-and-paste just doesn't have. Making mazes and floor plans is fast and fun! With GeoSTAMP your kids can enjoy the fun of stamp-pads without the mess! Create beautiful borders around your geoPaint works with ease!

*Each GeoSTAMP file holds up to 30 stamp images which you pick up, carry around the screen, and place anywhere you want with a simple press of a button. You can even layer stamp images to create new, intricate designs. And since GeoSTAMP displays your position on the screen, you can fine place your image exactly where you want it! Invert it, flip it left-right or top-bottom, make it into a "cookie cutter", even "paint" with it! GeoSTAMP is so versatile, you'll think of a "bizillion" ways to use it!!

In addition to the main program, The GeoSTAMP Disk comes with two utility programs to help you create and edit stamp sets:

* StampCollect is our favorite. With this Desk Accessory you can lift graphics right from a geoPaint screen! Use geoPaint's drawing tools to create stamps to add to your collection. Work with GeoSTAMP and StampCollect to build new stamp sets! Or "borrow" graphics from other geoPaint sources.

* StampEdit is a fast, easy-to-use pixel editor for creating new stamps or for editing existing stamp sets. This is the Application the "real" GEOS artists will use.

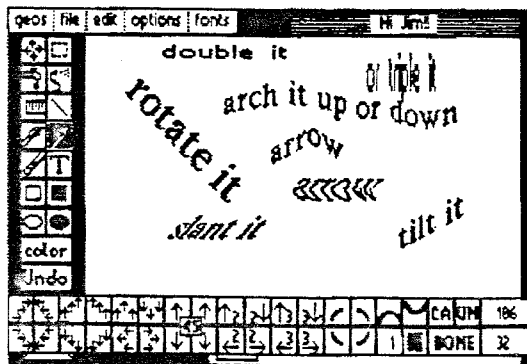
*Also on The GeoSTAMP Disk are as many stamp sets as we could fit, including borders, chess sets, a special puzzle game, and more!! You can go crazy building a maze with the maze sets; then let the Bach in you show thru with the two sets of music score-writing stamps!! Or throw together a quick monthly or weekly calendar!!! With the GeoSTAMP sets included, it's a snap!!!!

The disk that started it all...

DweezilDisk 1

featuring

NewTools2



The NewTools2 toolbox is layered over the bottom of the geoPaint screen.

NewTools was one of the most talked about GEOS Desk Accessories to come along in years, and with NewTools2--IT'S BETTER THAN EVER!!! Do things in GeoPaint that before you could only dream of: slant an object, tilt it, rotate it 45 degrees, make an arrow shape or an arch out of it, and MORE!! All of the best GEOS artists own NewTools2! NewTools2 is a MUST for the serious GeoPaint user!!

But that's not all you get on DweezilDisk 1. You get all of these great tools also:

- *Marker, a GEOS measuring tool Desk Accessory that lets you make fine "pencil" marks to locate your measurements.
- *CreatePatt, a new GEOS Desk Accessory that lets you create and save fill pattern sets using geoPaint.
- *PattDA, a GEOS Desk Accessory that loads fill pattern sets.
- *AutoPattA and AutoPattB, two Auto-Exec Applications which load fill pattern sets during GEOS boot-up or from the DeskTop.
- *PLUS....Over 90 fill pattern sets to get you started!!!

Advertisement



Available NOW from... **Quincy Softworks**

The Mammals Who Make GEOS Better!

"Dweezil Never Bytes!"

DweezilDisk 2

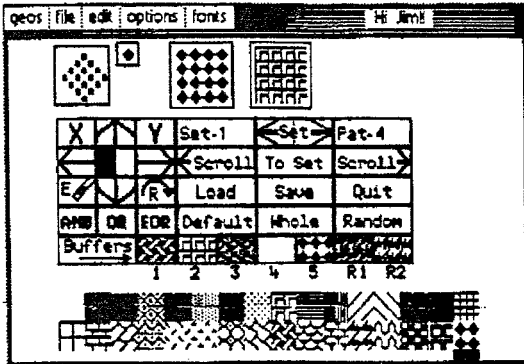
This publication was created using GEOS. Write to us to learn how inexpensive and easy it is to create quality, laser printed publications with geoPublish.

ULTIPATT!!

Introducing... **UltiPatt!!** The most complete, comprehensive and versatile GEOS pattern tool ever created!! NOT just a pattern editor! NOT just a pattern loader! Look at what this Desk Accessory can do:

- *Load fill pattern sets created with almost any pattern editor!
- *Use the pixel editor to edit or create patterns!
- *Let your computer create patterns from random!
- *Combine two patterns to make a new one!
- *Or use any of the 1600 patterns **UltiPatt** has built into it!
- *Pick and choose from all of these sources to develop pattern sets you can use right away, or save for later!!

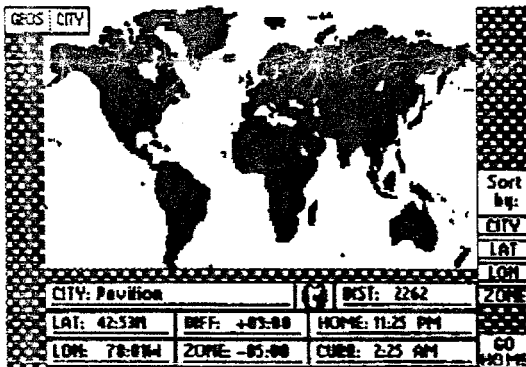
If you're serious about making GEOS patterns work for you, then you need **UltiPatt!!!**



UltiPatt, with geoPaint in the background.

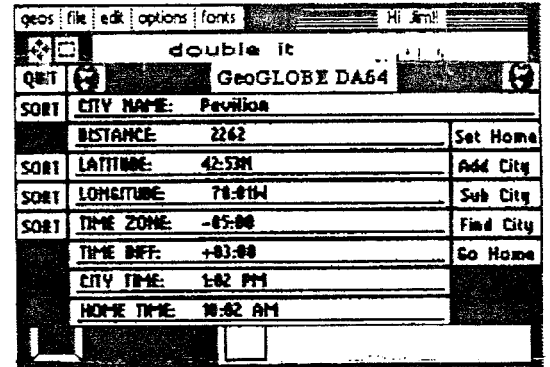
The geoGLOBE Collection!!

geoGLOBE, the global time and distance calculator, is now available in Desk Accessory and Application versions for both the 64 and 128!! Now everyone can enjoy the fun of knowing what time it is anywhere in the world! Or how far apart two cities are! Great to have during world crises! *A fantastic learning tool for the whole family!* Over 140 locations provided, or enter your favorite cities. Never wake up your overseas friends because you didn't know what time it was "over there"! Never be lost in the world again, with **geoGLOBE!!** (**DweezilDisk 2** contains all four versions of **geoGlobe**.)



Application version of geoGLOBE.

The demo screens feature the town of Pavilion, N.Y., where our friend Jim lives. It shows that Pavilion is 2,262 miles from our home in Hughson, CA. The Application screen dump was done at 11:25 P.M. our time; 2:25 A.M. at Jim's. A small dot on the map shows the approximate location of Pavilion; on the computer screen this dot flashes! The DA screen dump was done at 10:02 A.M. our time; 1:02 P.M. in New York.



Desk Accessory version of geoGLOBE with geoPaint in the background.

Please Read:

The screen dumps are from C64 program versions; however, all programs work on both the 64 and the 128, and some 128 versions work in 40 and 80 columns. NewTools2, Marker, CreatePatt, and GeoSTAMP are designed for use solely from within geoPaint. StampCollect is also designed for use within geoPaint, but may get successful results from within other programs also.

ORDER NOW !!

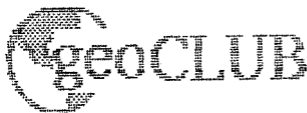
OFFICIAL UK DISTRIBUTOR

DWEEZIL DISK 1	£9:00
DWEEZIL DISK 2	£8:50
GeoSTAMP	£7:50

geoCLUB

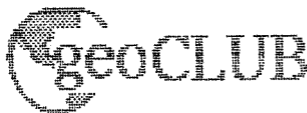
MANCHESTER

"Quincy Softworks", "Dweezil Never Bytes", and the "stick-dog in a party hat" logo are Trademarks of Quincy Softworks. Programs listed for sale in this publication are Copyright (C) 1990, 1991 by Quincy Softworks. GEOS and geoPaint are Trademarks of GeoWorks, Inc.



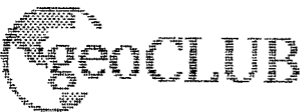
DISK 1

© geoCLUB 1991.



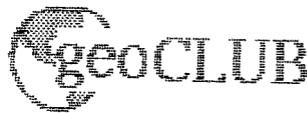
DISK 2

© geoCLUB 1991.



DISK 3

© geoCLUB 1991.



DISK 4

© geoCLUB 1991.